

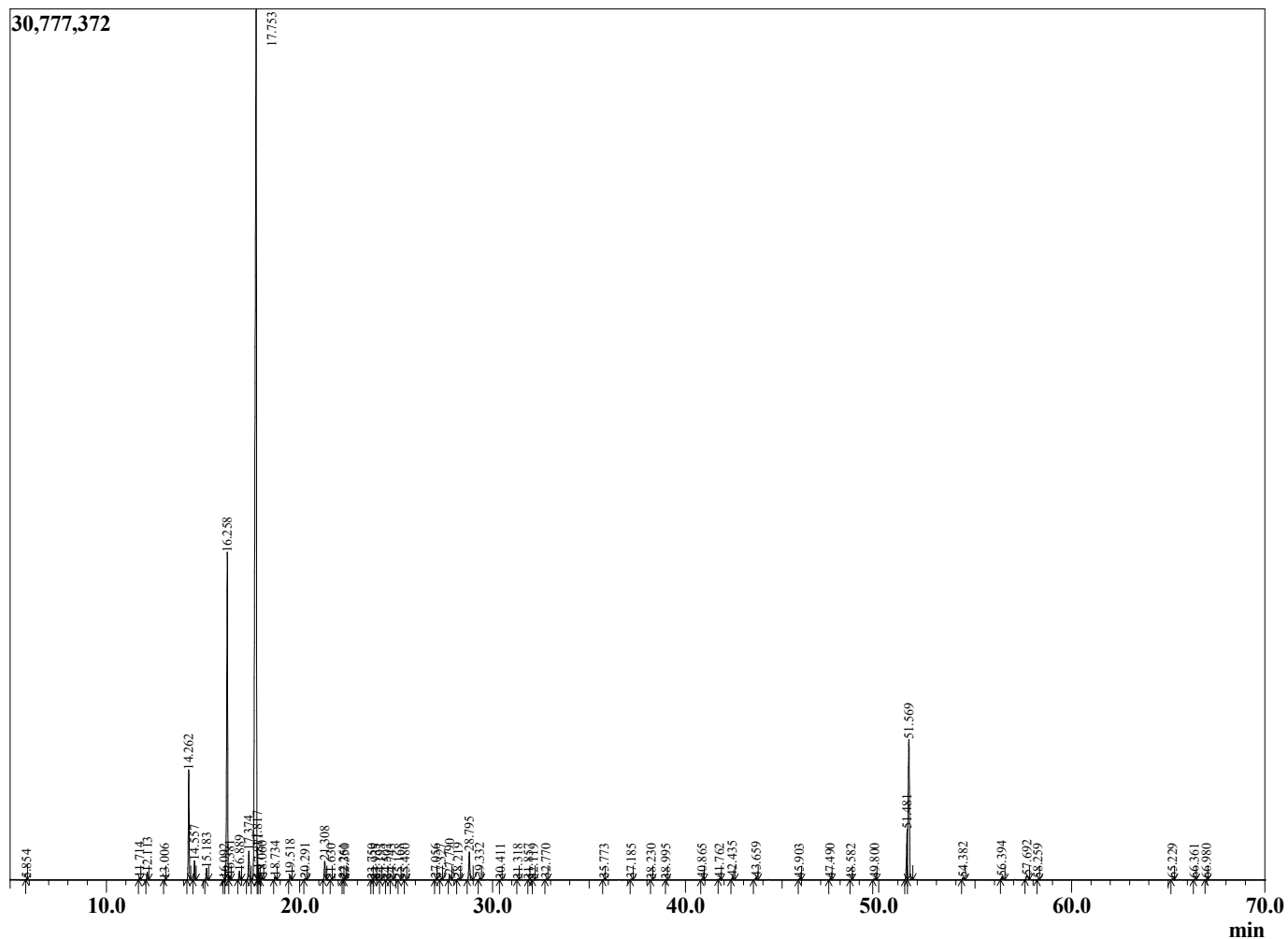
Sample Information

Sample Type : Essential Oil  
 Sample Name : Canarium luzonicum  
 Injection : 0.10  
 Volume :



Elemi  
 Lot# PHE10-EK  
 Country: Philippines

Chromatogram Canarium luzonicum



R.Time	Name	Peak Report TIC	Area%
5.854	Toluene		0.02
11.714	alpha-Thujene		0.08
12.113	alpha-Pinene		0.28
13.006	Camphene		0.02
14.262	Sabinene		4.63
14.557	beta-Pinene		0.80
15.183	Myrcene		0.49
16.092	Pseudolimonene		0.03
16.258	alpha-Phellandrene		15.41
16.381	delta-3-Carene		0.17
16.889	alpha-Terpinene		0.38
17.374	para-Cymene		1.41
17.753	Limonene		58.85
17.817	beta-Phellandrene		1.02
17.871	1,8-Cineole		0.29
18.060	cis-beta-Ocimene		0.13
18.734	trans-beta-Ocimene		0.15
19.518	gamma-Terpinene		0.22
20.291	trans-Sabinene hydrate		0.05
21.308	Terpinolene		0.89
21.630	para-Cymenene		0.01
22.261	Linalool		0.02
22.350	Unidentified		0.01
23.750	trans-para-Mentha-2,8-dienol		0.02
23.935	cis-para-Menth-2-en-1-ol		0.02
24.193	allo-Ocimene		0.01
24.502	cis-Limonene oxide		0.01
24.743	cis-para-Mentha-2,8-dienol		0.02
25.168	Unidentified		0.01
25.480	Camphor		0.02
27.056	Unidentified		0.03
27.327	Unidentified		0.04
27.790	Terpinen-4-ol		0.26
28.219	para-Cymen-8-ol		0.06
28.795	alpha-Terpineol		1.44
29.332	alpha-Phellandrene epoxide		0.08
30.411	trans-Carveol		0.02
31.318	cis-Carveol		0.01
31.857	Unidentified		0.01
32.119	Carvone		0.01
32.770	Piperitone		0.02
35.773	Carvacrol		0.03
37.185	Unidentified		0.03
38.230	delta-Elemene		0.01
38.995	alpha-Cubebene		0.01
40.865	alpha-Copaene		0.06
41.762	beta-Elemene		0.05
42.435	Methyleugenol		0.15
43.659	beta-Caryophyllene		0.15
45.903	alpha-Humulene		0.05
47.490	Germacrene D		0.05
48.582	alpha-Murolene		0.01
49.800	Unidentified		0.06
51.481	Elemicin		2.14
51.569	Elemol		9.07
54.382	Guaiol		0.11

R.Time	Name	Area%
56.394	gamma-Eudesmol	0.15
57.692	alpha-Eudesmol	0.34
58.259	Bulnesol	0.02
65.229	Phellandrene dimer	0.04
66.361	Cryptomeridiol	0.02
66.980	Unidentified	0.02
		100.00